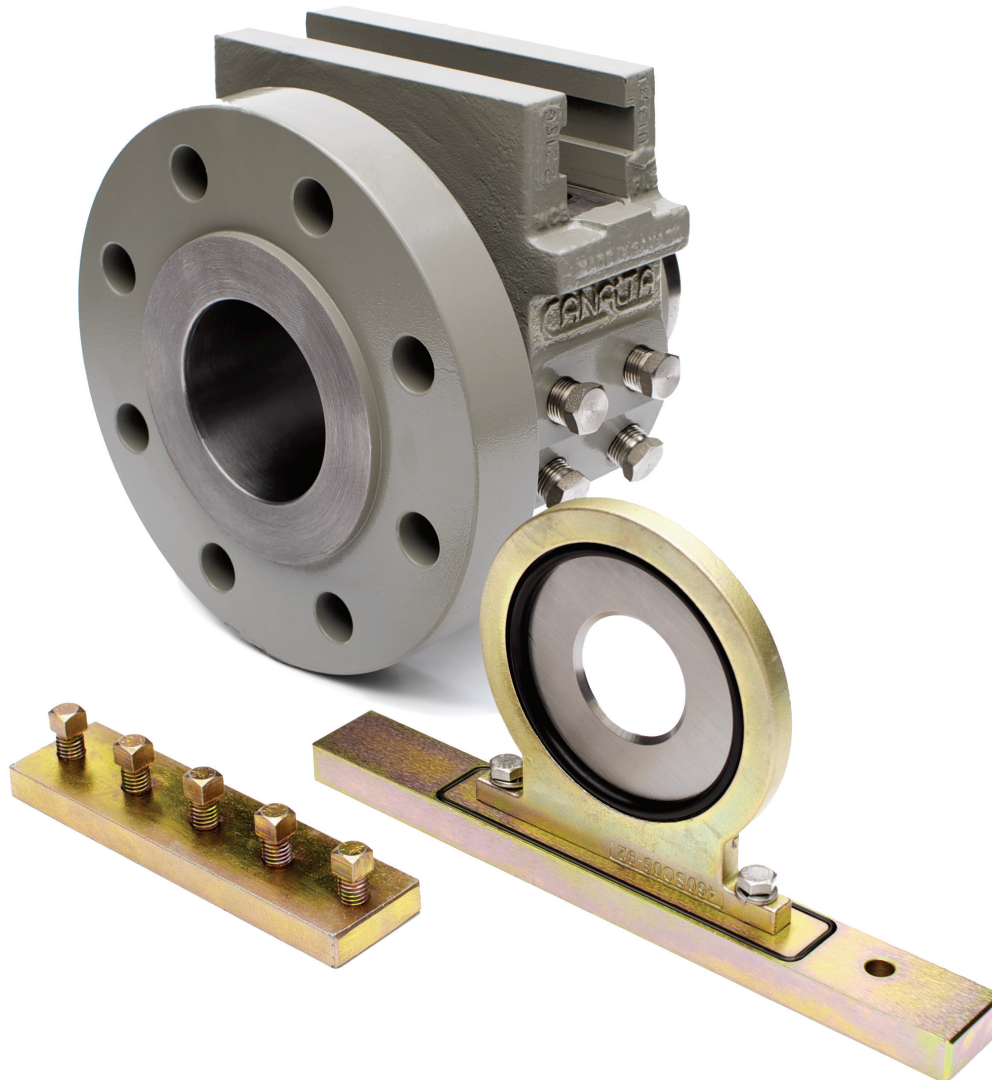


Canalta

Flow Measurement

A Canalta Controls Company



The Canalta Single Chamber Orifice Fitting

Exceptional Value means adding to your ***Bottom Line***
without sacrificing ***Quality, Service*** or ***Performance***

Call Us Toll Free: 1-855-CANALTA

An ISO 9001:2015 registered company

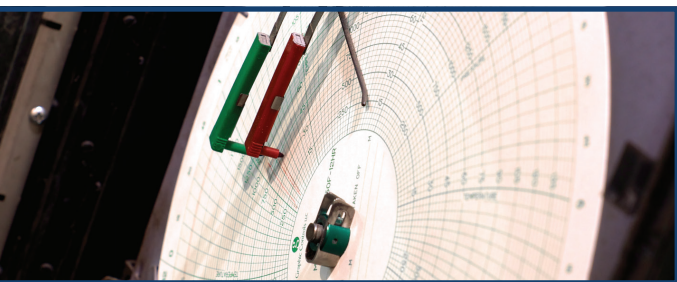
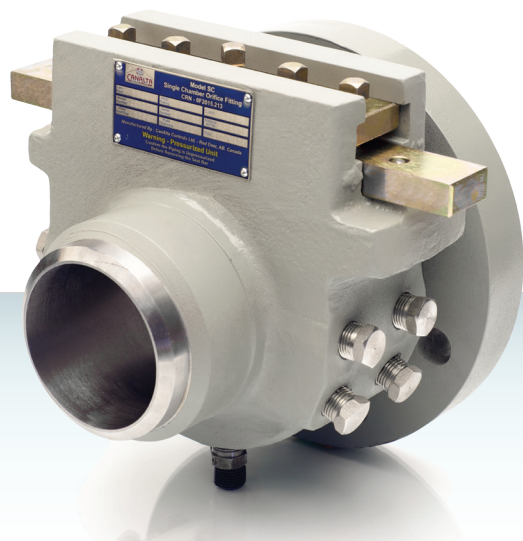
Phone: 403.342.4494

Email: sales@canaltaflow.com

www.canaltaflow.com

The **Canalta Single Chamber Orifice Fitting** is a high quality, high accuracy orifice fitting manufactured in a wide selection of sizes and materials. These units are built to meet or exceed ASME and ANSI specifications, as well as to comply with the requirements of the latest editions of AGA-3 / API-14.3 and ISO-5167. Whatever the application, your process will benefit from Canalta's proven reliability and can improve your bottom line without sacrificing quality, service or performance.

Delivering superior orifice fittings and exceptional value has been our core business for over fifteen years.



Our comprehensive **Quality Management System** includes full function, hydrostatic and pneumatic pressure testing to prevent defective orifice fittings from reaching service. Standard testing comes at no extra charge and includes verifiable pressurization to 150% of working pressure. Additional inspections, such as radiography, ultrasonic and liquid dye penetration, are also available.

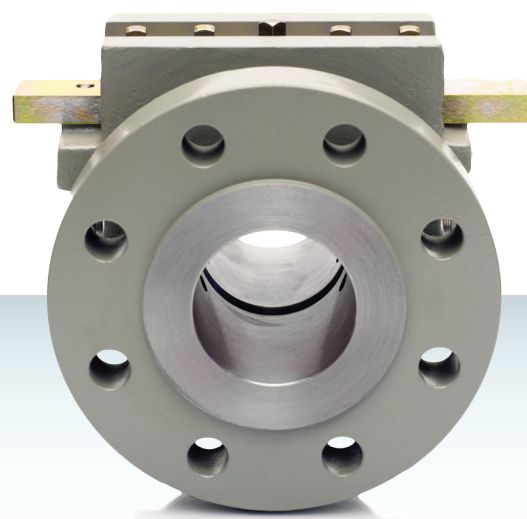
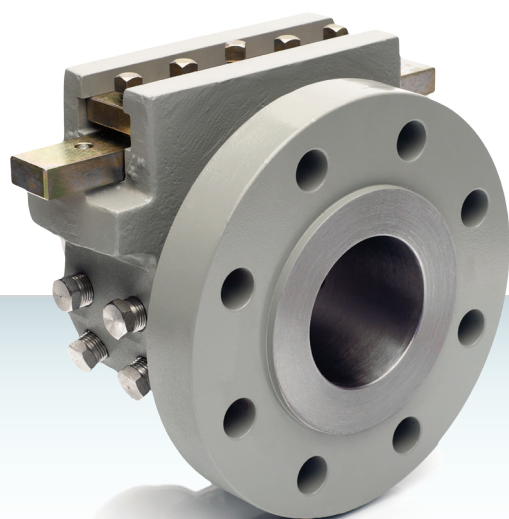
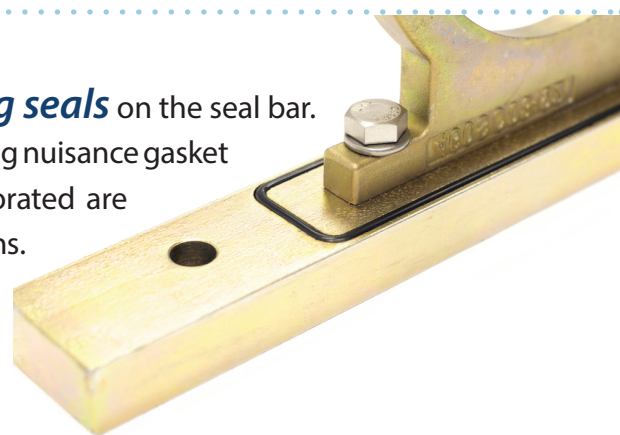


Our unit-specific **Documentation** packages include hydrostatic, seal and function test results as well as material test reports. An AGA latest version Inspection Report is submitted with every fitting and includes bore tolerance and roughness tests, orifice eccentricity, seal protrusion, plate sealing tests and other details critical to your process integrity.



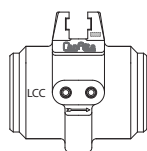
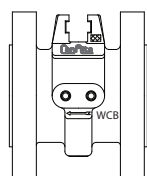
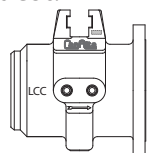
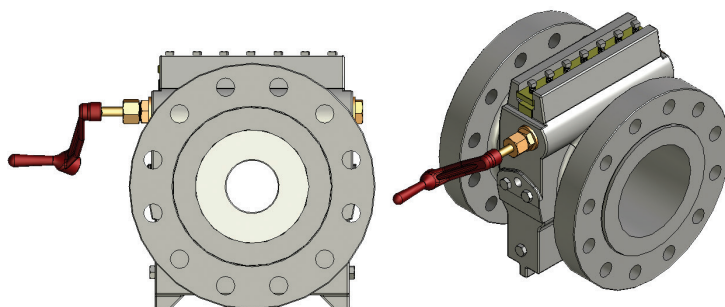
Each Canalta Single Chamber Orifice Fitting receives a standard coating that includes a non-lift oxide primer and fast-drying enamel finish in Canalta Grey. Custom coatings for special environments - maritime, humid, high temperature and others - custom colours and primer only applications are also available.

All Single Chamber Orifice Fittings come standard with **HNBR O-ring seals** on the seal bar. This feature provides you with superior sealing capability while eliminating nuisance gasket maintenance and clamping bar screw breakage. The O-rings incorporated are standard shelf sizes and can be supplied in a wide variety of compositions. Gaskets are also available and can be used when preferred or required.



Single Chamber Orifice Fitting models 8" and larger incorporate a rack and pinion gear system to manage the sizeable weight of large orifice plates and carriers. With this system, plate changing remains quick and easy.

These models also feature fully accessible and adjustable eccentricity of the orifice plate from the exterior of the fitting. Tamper-proof sealing is done on request.



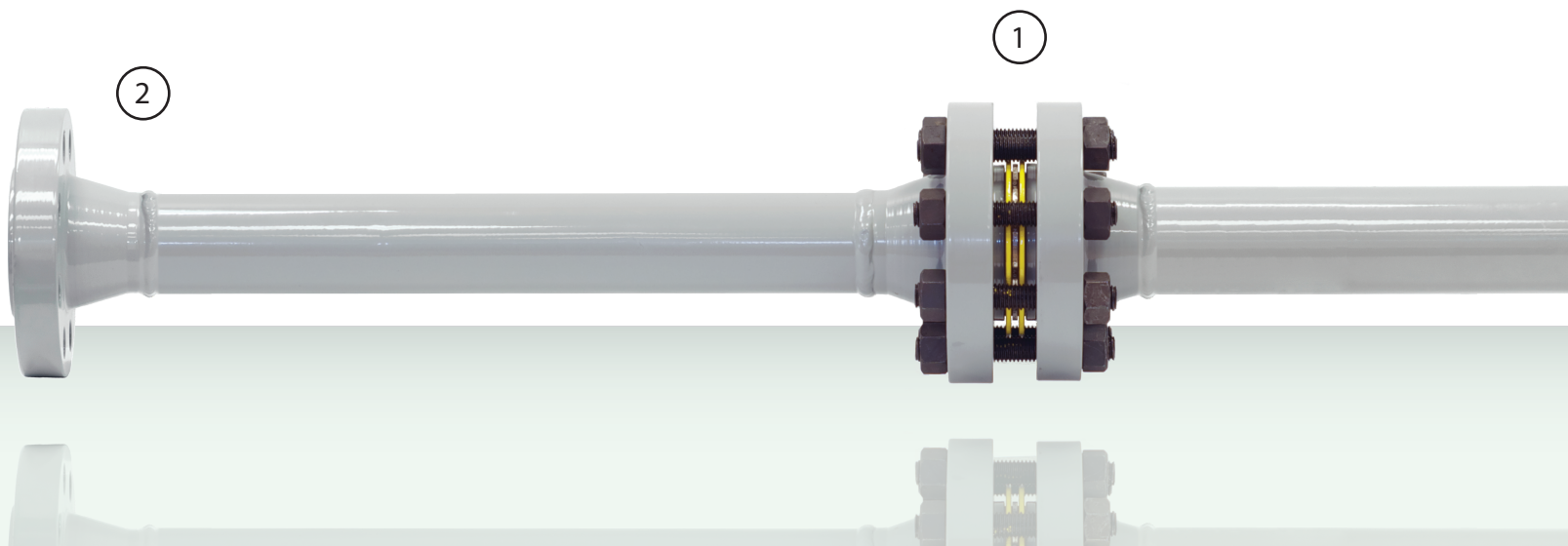
Canalta Single Chamber Orifice Fitting bodies are available in a number of standard and custom end configurations. Some of our most popular arrangements include

- Flangeneck (welding neck upstream, raised face / RTJ flange downstream)
- Flange X Flange (raised face / RTJ)
- Weldneck both ends

Single Chamber Orifice Fitting Bodies are also available with an extra set of tele-metering tap holes on each side as an option.

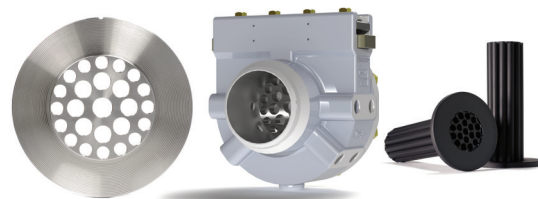
METER RUNS

All Canalta Single Chamber Orifice Fittings can be supplied with complete custom-designed *Meter Runs* and *Flow Conditioning Solutions* that meet your exact specification or performance needs.



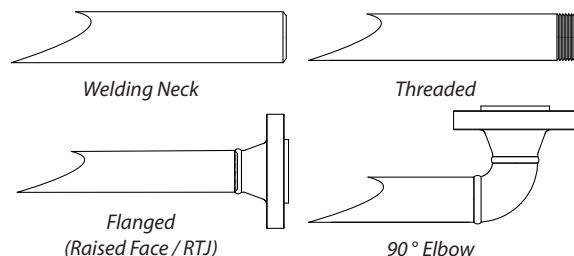
1 FLOW CONDITIONING ACCESSORIES

The goal of meter run design is to account for swirl and turbulence. Suitable for a wide range of flow measurement methods and equipment, Canalta's Contour™ lineup of Flow Conditioners, Flow Conditioner Housings and Straightening Vanes will help you develop the flow profile you need to achieve maximum performance and accuracy in the field.



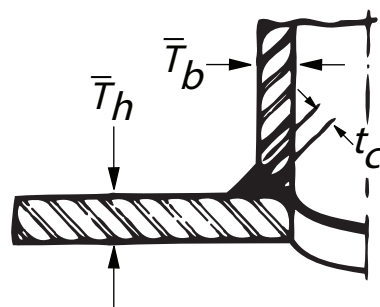
2 END CONNECTION OPTIONS

Canalta Meter Runs can be fabricated with a variety of standard tube ends. All inner surface welds are precision ground and inspected to meet exacting I.D. surface and roundness tolerances. Per your requirements, two and three-piece meter runs can have dissimilar end types up and downstream of the orifice fitting.



3 WELDING SPECIFICATION

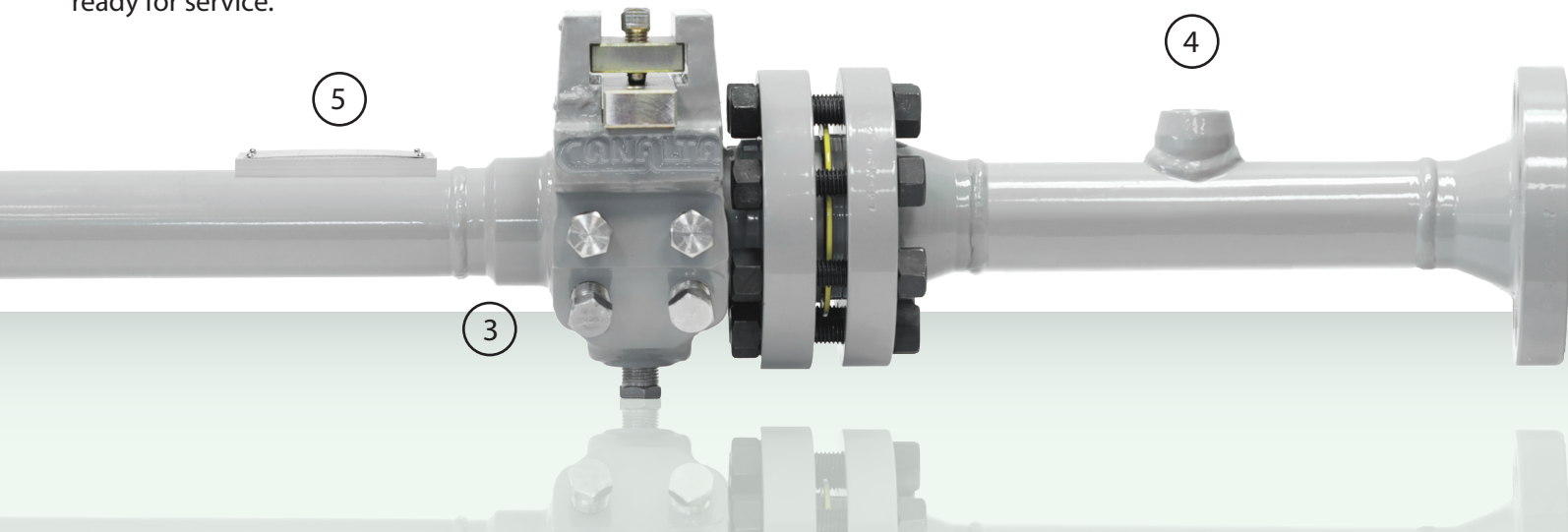
Each Canalta Meter Run is professionally fabricated by our team of certified "B" Pressure Welders and experienced pipe finishers to meet and exceed the stringent specifications of AGA /API/ISO. Our welding procedures are registered with the Alberta Boiler and Safety Association (ABSA) and are in accordance with the applicable ASME Boiler and Pressure Vessel Codes. Canalta will ensure that all of your NDT and stress relieving requirements are met with full documentation.



Whether the size is 2" or 30", high or low pressure, wet, dry or corrosive service, we can put together a custom meter run package that meets your specification or performance needs and perfectly matches your Canalta Orifice Fitting.

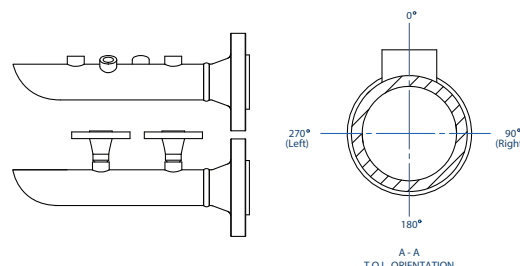
You trust Canalta at the orifice plate. When accuracy counts, trust Canalta up and downstream, too.

We've been working to AGA-3 / API 14.3 and ISO 5167-1 specifications for over fifteen years. Skilled technicians, engineers and inspectors work together to manufacture first-rate meter tubes out of pipe carefully selected and prepared with the appropriate surface requirements, roundness and I.D. tolerances. Hydrostatic test results are included as a standard. PWHT stress relief, ultra-sonic and liquid dye penetration test results are available on request. Our rigorous inspection regime and comprehensive documentation mean you can be sure your meter run is reliable, exceptionally accurate and ready for service.



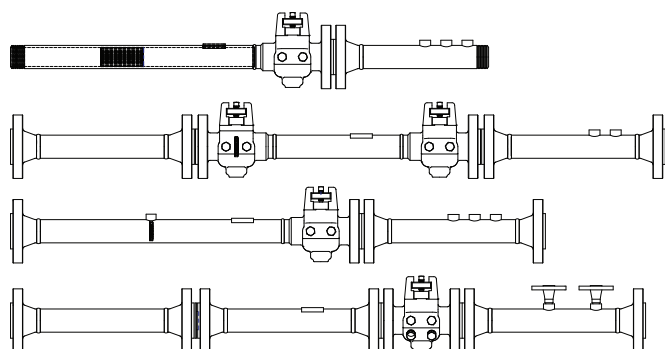
4 BRANCH CONNECTION OPTIONS

Industry standard offerings provide one 1" and one 3/4" branch connection on the downstream spool. Our custom meter tube design capability allows us to fabricate nearly any combination of weldolets, sockolets, flanged outlets, threadolets and latrolets in any orientation.



5 METER RUN SPECIFICATION PLATE

All Canalta Meter Runs include a specification plate mounted immediately upstream of the orifice fitting. These spec plates detail pipe schedule, pressure rating, maximum beta, maximum orifice and other information essential to proper operation.



With literally endless configurations possible, Canalta will custom design and fabricate your meter run for any application.

**ACCURACY, RELIABILITY,
PERFORMANCE.**

ORIFICE PLATE SEAL OPTIONS & CARRIER ASSEMBLIES

Type "K" Standard 2000 Edition Seal Assembly

This is the standard seal assembly supplied with all orifice fittings from sizes 2" through 8". This unit is used with a .562" seal gap for fittings sizes 2" through 6", and with a .688" seal gap for 8" fittings. The single downstream seal function offers superior sealing capability while reducing seal damage during insertion. Plate seal bypass tested down to 1" water column.

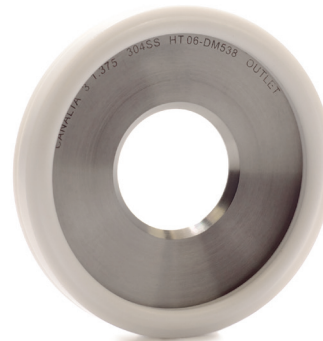
The seal assembly is comprised of an elastomer seal and one stainless steel retainer ring. Exact and repeatable concentricity is maintained with the metal to metal contact throughout the entire 360° circumference of the orifice plate to the plate carrier mechanism.



Teflon Snap Seal

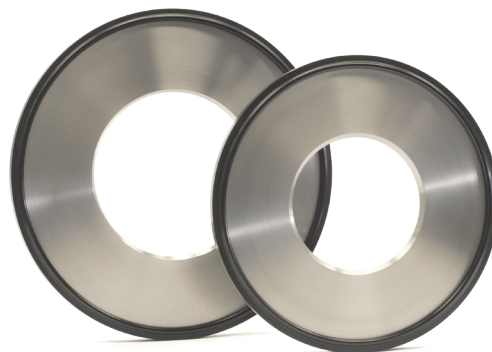
The Teflon Snap Seal provides positive plate sealing in the harshest of process environments. The two-piece design snaps over the orifice plate without the use of metal clips or retainers. A specially designed recess absorbs the insertion pressures, minimizing permanent compression and distortion.

The raised section adjacent to the recess creates a positive seal against the orifice plate, preventing bypass leakage. These two unique design features enhance seal performance while extending the life expectancy of the seal assembly.



Bonded "FLEX" Seal

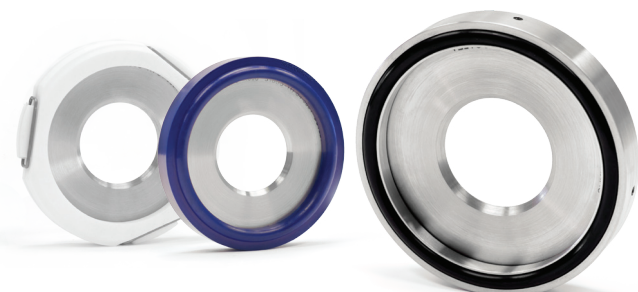
This is the standard seal supplied with all Canalta Orifice Fitting model sizes 10" and larger. Designed with a unique "hollow core" recess, this seal has impressive expansion and contraction capabilities when compared to traditional solid rubber seals. The recess allows the seal to absorb insertion pressures, minimizing tearing, distortion and permanent compression. The 80 duro HNBR seal is adhesively bonded to the orifice plate, creating total and permanent contact between the plate and seal and preventing bypass leakage.

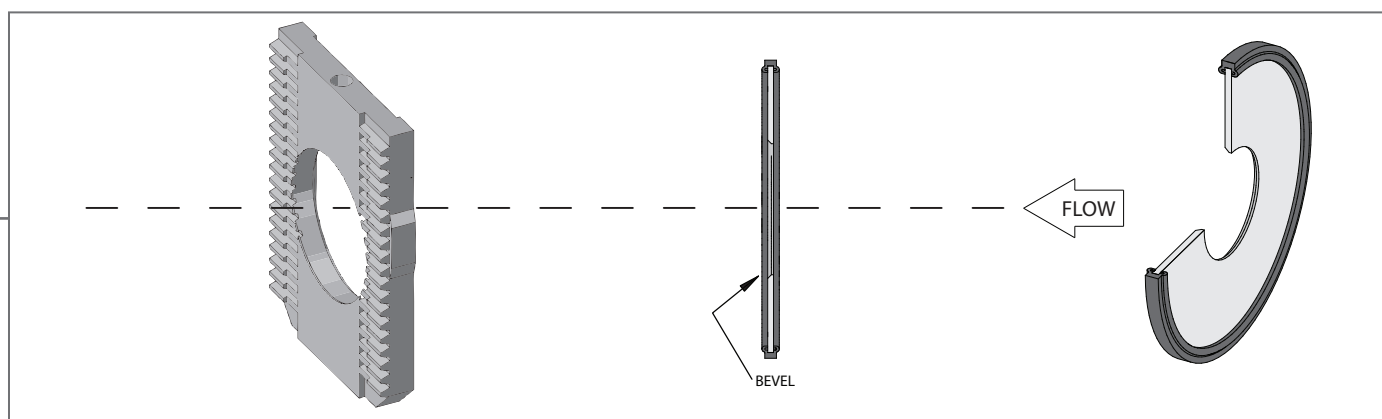
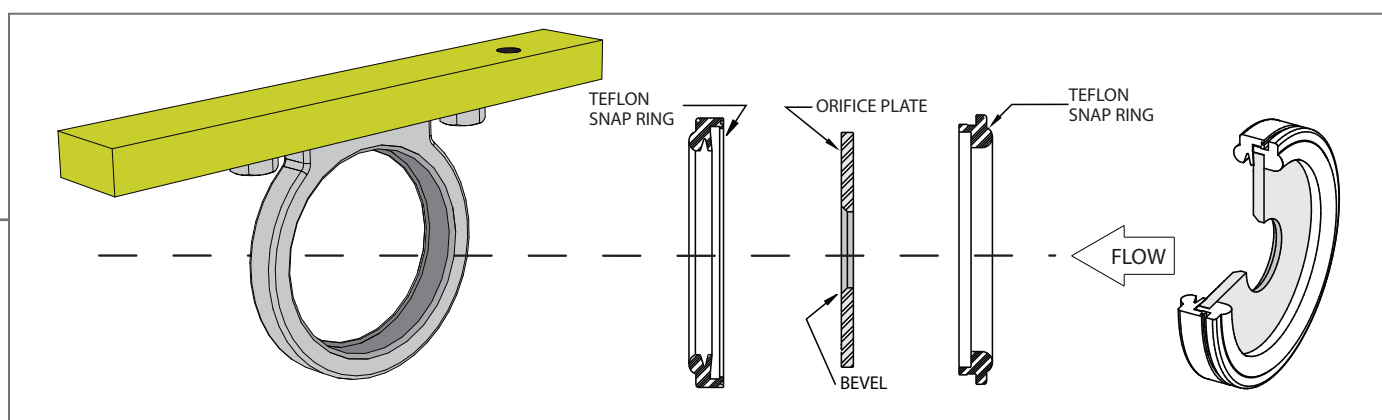
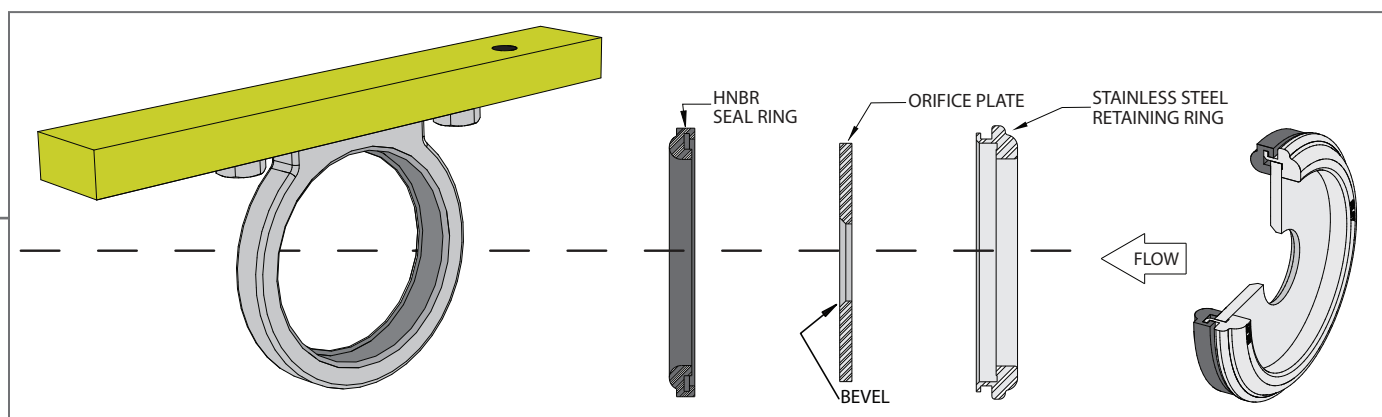


Legacy Replacement Seals

Canalta supplies a selection of legacy plate seals for situations in which direct and exact seal replacement is required or preferred. Models include two piece clip-style Teflon, solid core HNBR or Nitrile and the stainless steel dual ring assemblies.

We will also work with you to custom design and manufacture purpose-built seals for your unique or special applications.





TECHNICAL SPECIFICATIONS

Design	Orifice fittings supplied in Canada are built in accordance with the ABSA Quality Control Program and carry a CRN registration number. Industry Canada Approval Number AF-0014. In compliance with ASME 16.34 and ASME 16.5, ASTM specifications, AGA-3 Latest Edition and ISO-5167.
Body Materials	A216 WCB, A216 WCC, A352 LCC, A358 CF8M, A995 Gr4A, A995 Gr6A, Custom
Internal Parts	AISI 4130 Carbon Steel, 316 or A351 Stainless Steel
Sizes and ANSI Class	2" through 26", 150 through 1500 ANSI raised face flange 600, 900 and 1500 flanges also available in RTJ face flange
U/S D/S Connections	Flangeneck design (weldneck U/S, flange D/S) Flange x Flange Weldneck both ends
Internal Bore Sizes	40, 60, 80, 100, 120, 160 and custom sizes
Sealing Compounds	Seal bar - HNBR O-ring standard, gasket optional Orifice plate - Type "K" 2000 Edition formed HNBR seal on a 316 SS retainer ring Dual Ring HNBR O-rings standard on a 316 SS retainer ring assembly Teflon Snap Seal two-piece virgin Teflon assembly
Line Bore I.D. Tolerance	In conformance with AGA-3 and ISO-5167 Latest Editions
Eccentricity Repeatability	In conformance with AGA-3 and ISO-5167 Latest Editions
Tap Connections	Two 1/2" NPT per side standard, two 1/2" NPT additional per side optional (TT) 2" and 3" fitting sizes center bored to .375" inside diameter 4" and larger sizes center bored to .500" inside diameter Tolerance +/- 1/64"
Orifice Plate Seal Gap	2" through 6" = 0.562", 8" through 14" = 0.688", 16" through 20" = 0.813", 24" through 26" = 0.875"
Operating Shaft Location	Shafts are a feature only on fitting sizes 8" and larger Left hand mount standard on sizes 8" through 16" Dual operation on sizes 20" and larger
Operating Temperature	Standard at -20° to 100° F, optional -40° to 1200° F
Operating Position	Vertical or horizontal

Conformance

All fittings come standard with a documentation package including hydro-test, function test, inner valve seal test, quality control inspection and material test reports. Traceability is maintained in accordance with the ISO-9001 Quality Control Program. The fittings are manufactured within the guidelines of ASME 16.34 and ASME 16.5. When required, radiography, stress relief, ultrasonic and liquid dye penetration tests can be performed with the relevant report submitted.

Reporting

An AGA latest version inspection report is included with the purchase of every fitting. The documented tests include:

- I.D. Bore Tolerance
- Instrument Tap Diameter
- Instrument Tap Location
- Tap Communication
- Plate Seal Test
- Seal Protrusion
- Orifice Eccentricity
- Bore Inside Diameter
- Bore Roughness



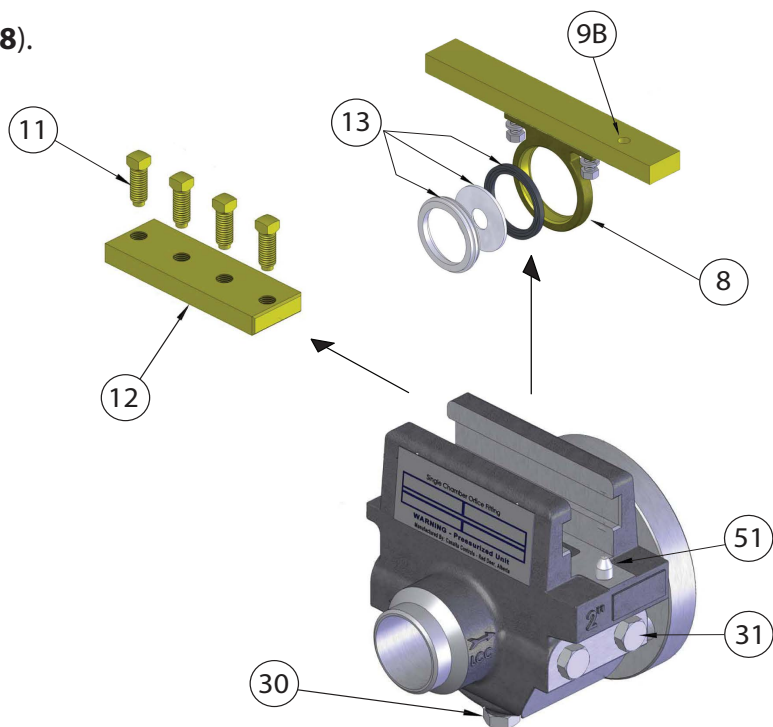
Our **Quality Control** systems guarantee that your **Canalta Orifice Fittings** are **service ready, reliable and truly accurate.**

OPERATING INSTRUCTIONS - 2" - 6" SINGLE CHAMBER MODELS

REMOVING THE ORIFICE PLATE

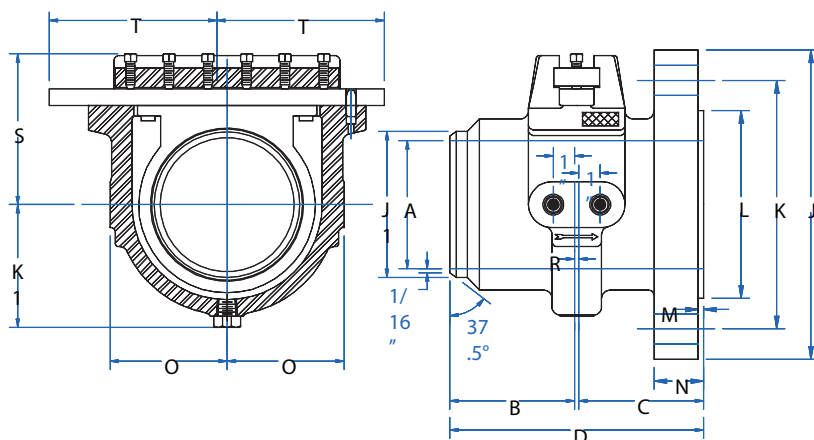
WARNING: THE UNIT MAY BE UNDER EXTREME HIGH PRESSURE. Failure to depressurize the line before attempting to remove the seal bar may result in bodily harm or death. Follow all instructions carefully.

1. Ensure that the fitting is completely depressurized.
2. Loosen the clamping bar screws (11) and remove the clamping bar (12).
3. Remove the plate carrier and seal bar unit (8).
4. Remove the orifice plate and seal assembly (13) from the plate carrier.
5. Extract the orifice plate from the seal.



Complete dimensions tables for all of our orifice fitting models are available by contacting your nearest Canalta Flow Measurement sales representative.

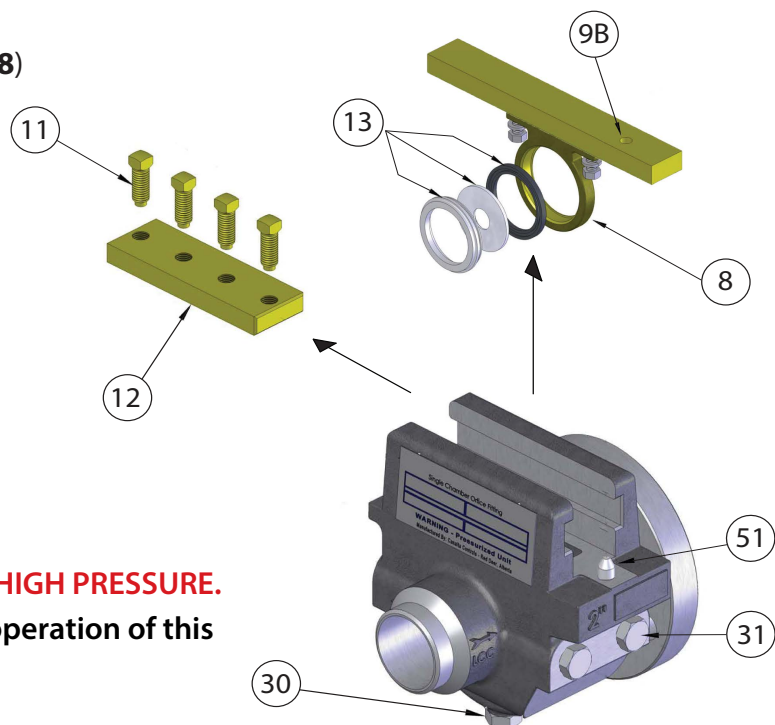
Find a list of our offices and global distribution partners at www.canaltaflow.com/global



OPERATING INSTRUCTIONS - 2" - 6" SINGLE CHAMBER MODELS

REPLACING THE ORIFICE PLATE

1. Reinstall the orifice plate into the seal.
2. Install the seal assembly (13) into the plate carrier (8), ensuring that the orifice plate bevel faces downstream.
3. Check that the seal bar O-ring or gasket is clean and in position.
4. Replace the plate carrier and seal bar unit (8) while ensuring that the index hole (9B) is placed the seal bar alignment pin (51).
5. Slide the clamping bar (12) back into place and tighten the clamping bar screws (11).
6. Check that the meter tap and drain plugs (30, 31) are properly tightened.
7. Repressurize and return the line to service.

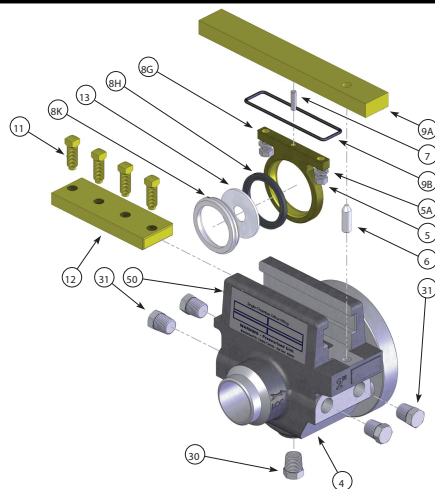


WARNING: THE UNIT MAY BE UNDER EXTREME HIGH PRESSURE.

Ensure all operating staff are trained in the safe operation of this and all other pressurized equipment.

Looking for general assembly diagrams? Contact your nearest Canalta Flow Measurement sales representative to get all of the technical documents you need.

Find a list of our offices and global distribution partners at www.canaltaflow.com/global

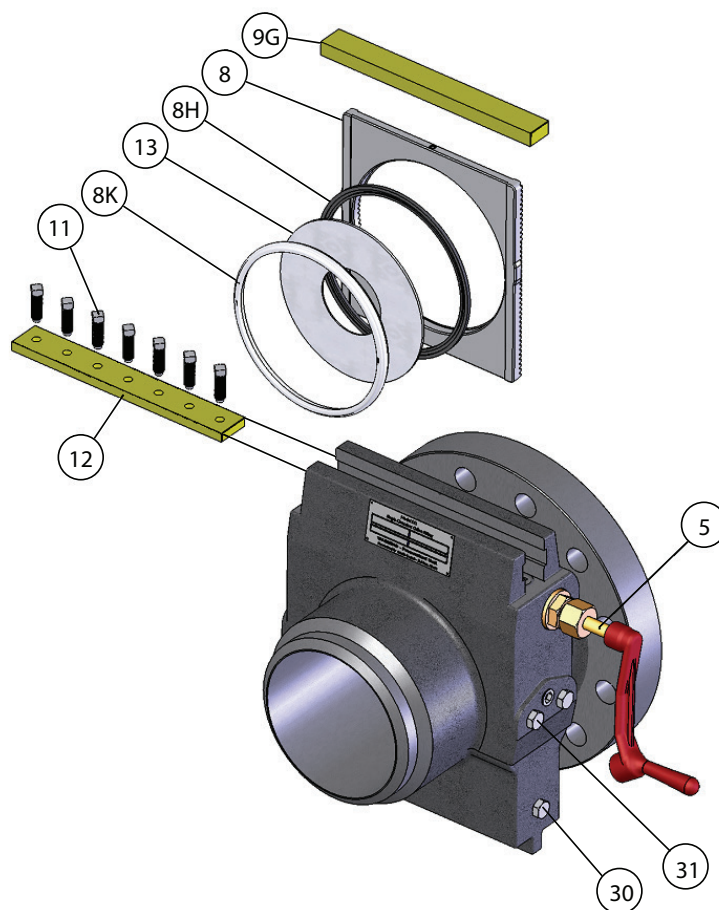


OPERATING INSTRUCTIONS - 8" - 16" SINGLE CHAMBER MODELS

REMOVING THE ORIFICE PLATE

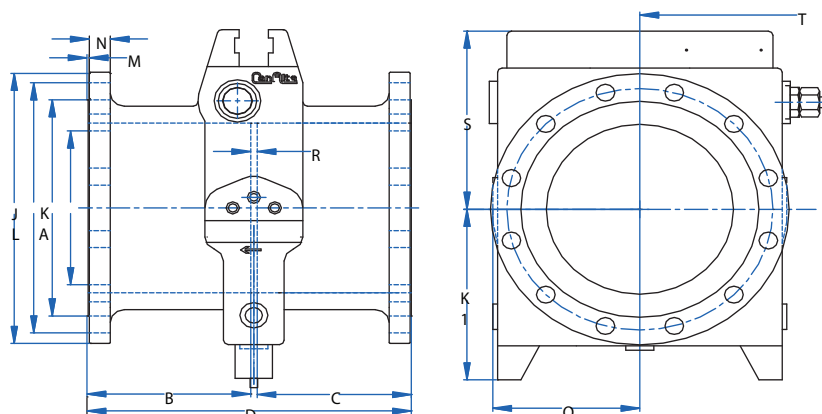
WARNING: THE UNIT MAY BE UNDER EXTREME HIGH PRESSURE. Failure to depressurize the line before attempting to remove the seal bar may result in bodily harm or death. Follow all instructions carefully.

1. Ensure that the fitting is completely depressurized.
2. Loosen the clamping bar screws (11).
3. Remove the clamping bar (12) and seal bar (9G).
4. Rotate the plate carrier pinion gear (5) to raise the plate carrier assembly.
5. Remove the orifice plate (13) and seal assembly (8H, 8K) from the plate carrier (8).
6. Extract the orifice plate (13) from the seal.



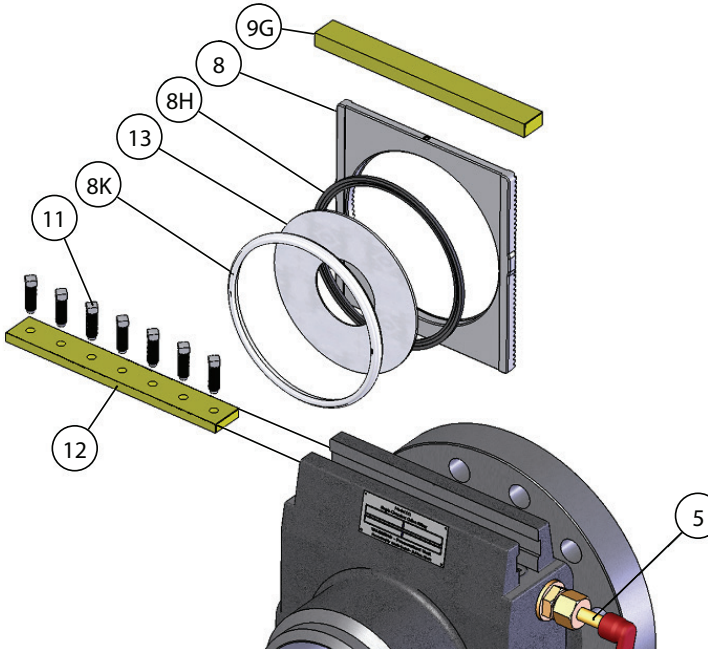
Complete dimensions tables for all of our orifice fitting models are available by contacting your nearest Canalta Flow Measurement sales representative.

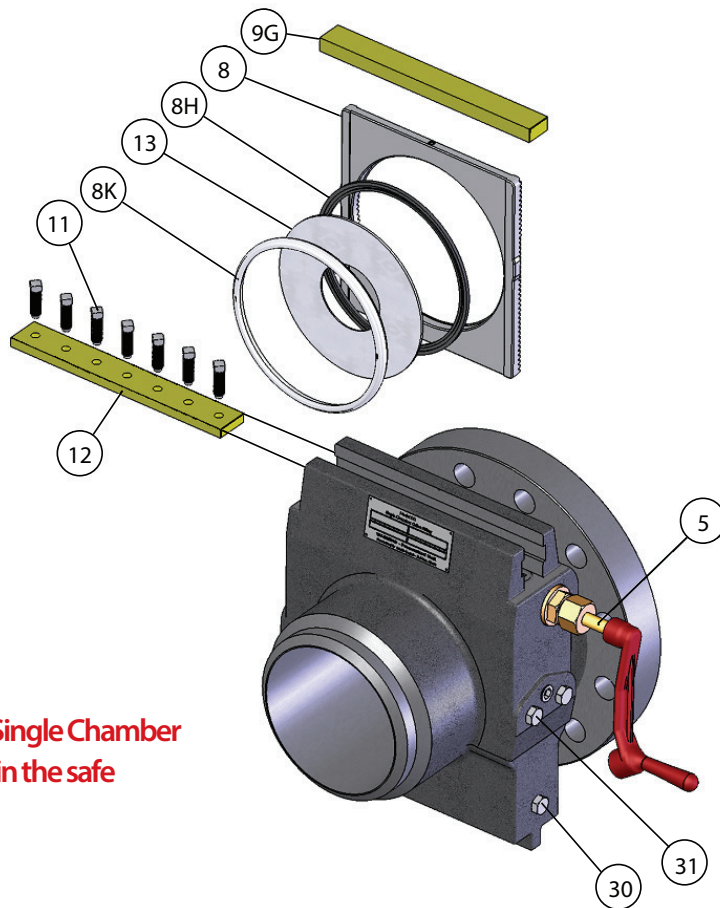
Find a list of our offices and global distribution partners at www.canaltaflow.com/global



OPERATING INSTRUCTIONS - 8" - 16" SINGLE CHAMBER MODELS

REPLACING THE ORIFICE PLATE

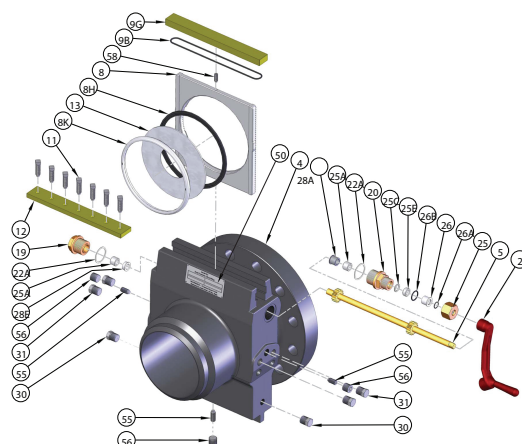
1. Reinstall the orifice plate (**13**) into the seal.
 2. Install the seal assembly (**8H**, **8K**) into the plate carrier (**8**), ensuring that the orifice plate bevel faces downstream.
 3. Insert the plate carrier assembly into the fitting and lower it using the plate carrier pinion gear (**5**).
 4. Replace the seal bar (**9G**) and clamping bar (**12**).
 5. Tighten the clamping bar screws (**11**).
 6. Check that the meter tap and drain plugs (**30**, **31**) are properly tightened.
 7. Repressurize and return the line to service.
- 
- The diagram illustrates the assembly components for the orifice plate. It shows the plate carrier (**8**) with the seal assembly (**8H**, **8K**) and the orifice plate (**13**) being installed. The seal bar (**9G**) and clamping bar (**12**) are shown being replaced. The clamping bar screws (**11**) are shown being tightened. The plate carrier pinion gear (**5**) is shown being used to lower the assembly into the fitting.



These instructions are attached to the body of each Canalta Single Chamber Orifice Fitting. Ensure that all operating staff are fully trained in the safe operation of this and all other pressurized equipment.

Looking for general assembly diagrams? Contact your nearest Canalta Flow Measurement sales representative to get all of the technical documents you need.

Find a list of our offices and global distribution partners at
www.canaltaflow.com/global



INSTALLATION RECOMMENDATIONS

The Single Chamber Orifice Fitting is typically installed in conjunction with upstream and downstream meter run sections (tubes). This is essential to meet the recommendations of both AGA Report 3 and ISO 5167. To obtain the best measurement results, follow the recommended piping configurations and installation requirements of either of these two standards, as well as the recommendations below.

1. Always ensure that operating staff are competent and properly trained to operate this and all other pressurized equipment.
2. When installing the fitting or meter run, ensure that the flow arrow on the outer surface of the fitting corresponds to the direction of flow in the line.
3. Attention to clearances is essential. Consult the attached dimensional drawings and tables for details. Ensure there is operating clearance above the top of the fitting for removal of the plate carrier. For 8" - 16" Single Chamber models, additional clearance at the sides of the fitting is necessary for pinion gear rotation and operating wrench removal.
4. When used to measure wet gas, the vertical mount is recommended to prevent dam formation against the orifice plate.
5. Instrument tap lines should be installed sloping upwards to the differential pressure measurement instrument. Where this cannot be accomplished, use seal pots to chemically seal the sensing lines and eliminate hydrostatic head errors.
6. To avoid damage to the orifice plate, ensure that the orifice plate and plate carrier are removed from the fitting prior to pressure testing the system.
7. Before inserting the orifice plate and plate carrier into the fitting, always ensure that the lower cavity of the fitting is free of debris. If debris has accumulated, remove the lower drain plugs and rod-clean the lower section.



ADDITIONAL PRODUCT LINES

Canalta also offers these other high quality product lines. Visit us on the web at www.canaltaflow.com to get all the information, or contact us to request print materials.

The Canalta Dual Chamber Orifice Fitting

A high quality, high accuracy orifice fitting manufactured in a wide selection of sizes and materials, the Canalta Dual Chamber Orifice Fitting is designed and constructed to allow for orifice plate inspection or replacement under pressure without interruption in the flow line.

Available as fitting only or with complete meter run, 150# - 2500# ANSI ratings, with carbon or stainless steel internals and a variety of connection configurations.



Parts, Accessories & Repair Kits

Parts and repair kits available for Single and Dual Chamber Orifice Fittings, meter runs and flow conditioning solutions.

Our parts and accessories offerings are interchangeable with the current industry standard orifice fitting brand, making Canalta Orifice Fitting internals suitable for re-builds and re-works of our competitors' product lines at substantial cost savings.

CONTACT INFORMATION

Canalta 
Flow Measurement

A Canalta Controls Company

Phone: 403.342.4494 Email: sales@canaltaflow.com

Fax: 403.346.7110 Web: www.canaltaflow.com

Call Us Toll Free: 1-855-CANALTA

6759 65th Avenue
Red Deer, AB T4P 1X5
CANADA

Find a list of our global distribution partners at www.canaltaflow.com/global

The "Canalta Flow Measurement" name and logo are trademarks of Canalta Controls Ltd. All other trademarks are the property of their respective companies.

All information presented here is for information purposes only. Though every effort has been made to ensure their accuracy, the contents of this publication shall not be construed as warranties or guarantees, expressed or implied, regarding the products or services described herein, or their use or applicability. Due to Canalta's commitment to quality and innovation, all product designs, specifications and information material, including the contents of this publication, are subject to change without notice. Responsibility for the proper selection, maintenance and use of any product remains with the customer. SAFETY FIRST.

Copyright, trademark and other forms of proprietary rights protect the contents of this publication.

© 2011 Canalta Controls Ltd. All rights reserved. Unauthorized reproduction in whole or in part is prohibited.